

SPECIALS
\$9.00 per can



"Not Only Australian Made But
Australian Owned"

UNI-MIG WELDING

MACHINE & HELMET PACKAGE - BWKMM180KIT includes:
SB15 3M Euro Connect Torch, 3M EARTH Direct Connect Lead,
UNI-FLAME Twin Gauge Argon Regulator, 2M Gas Hose Complete with
fittings, 1 x 0.5Kg Spool Solid Wire plus drive roller, 1 x 0.45Kg Spool
Gasless Wire plus drive PLUS Graphic Welding Helmet,
Auto-Darkening with 96x42mm viewing area, Variable Shade 9-13



BWKMM180KIT

180 MIG Kit
with Helmet
\$599.00

**180 Amp DC MIG Welding Machine
with Graphic Welding Helmet**



Ti2000
\$995

TOPINI
GENERATORS

For detailed Information visit:
www.itradesupplies.com.au



Nitrile Blax PF

\$12.65
Per Box of 100 gloves

Sml: 41079 Med: 41080
Lge: 41081 XLge: 41082

pro-val
by RCR

Black nitrile gloves - strong, durable with
excellent grip, outstanding chemical resistance,
particularly with petroleum based chemicals.



Hammer Safety Glasses

Large hard coated polycarbonate
lens for great vision and
stylish protection. UV treated.



900075



900074

Available in
smoke or
clear lens

\$3.50/pair
for up to 48 pairs
\$2.95/pair
for 48+ pairs
Note: Sold in packs of 12

Certified to
AS/NZS1337

WD-40 Trade Pack

Contains
two
425g
Cans!



RED HOT DEAL!
\$13.90

61664



51008 \$398

MECHANICAL FUEL METER

- Flow rates of 20-120 L/min
- 1" BSP (f) inlet and outlet ports
- Max. working pressure of 145psi
- Maximum batch total 999L



L4675 \$78

IMPERIAL GREASE NIPPLE ASSORTMENT KIT

- Includes 101 of your most popular industrial type grease nipples in a convenient compartmentalized refillable carry kit



01A12LM \$450

GPI IN LINE ELECTRONIC FUEL METER

- Maximum batch total of 9,999L
- For use on gravity feed or fuel transfer pumps in the 10-100 L/min flow range



NDP-15FPH \$1,033

1/2" AIR OPERATED DIAPHRAGM PUMP

- Flow rates of up to 45 L/min
- 1/2" BSP (f) fluid inlet & outlet
- 1/4" BSP (f) air inlet
- Weight of just 3.5kg



670AN3 \$1,037

450g 18V CORDLESS GREASE GUN

- Grease pressure of up to 8,000psi
- Delivery rates of up to 170 g/min
- Up to 24 x 450g cartridges per charge



600A \$78

450g LEVER ACTION GREASE GUN

- Develops grease pressures of up to 12,000psi
- Delivers up to 1.6g of grease per stroke



21040 \$50

530mL CAPACITY OIL SUCTION GUN

- Ideal for the draining and filling of diffs, gear boxes and engine blocks
- A double 'V' packing ensures that oil does not leak through the rear of the gun



F20020 \$322

EL SERIES 12V REFUELLING KIT

- Flow rates of up to 38 L/min
- Duty cycle of 30 minutes on, 30 minutes off
- 12 month warranty applies



424170 \$1,104

20kg AIR OPERATED GREASE KIT

- Delivery rates of up to 0.9 g/min
- 55:1 ratio air motor develops grease pressures up to 7,950psi



501A \$145

ROTARY DRUM PUMP

- Includes 2.2m of farm tank hose, bung adaptor, rubber gasket, a four chamber rotor assembly, spout and spout holster



8828N2 \$53

20L GEAR OIL DRUM PUMP

- Delivering up to 110mL per stroke
- Comes complete with a Reike adaptor and downtube extension



20044 \$148

CORDLESS LED WORKSHOP LIGHT

- 30 high intensity LEDs emit 7-8 hours of light before recharge
- Shatterproof polycarbonate lens

Prices offered include GST.

*Applies to the vast majority of Alemlube products



\$659

MODEL: SP50097
134pc Metric/SAE Tool Kit

- All sockets, socket accessories & ROE spanners come in hi-density foam storage system
- Metric & SAE combination spanners
- 1/4", 3/8" & 1/2" dr metric & SAE sockets
- 1/4, 3/8 & 1/2" 45T ratchets • 1/4, 3/8 & 1/2" flex handles
- 3/8" dr 5/8 & 13/16" spark plug sockets
- Combination pliers & diagonal cutters • Screwdrivers • Adjustable wrench
- Adaptors • Hex keys • Hammer • Wobble extension bars • 7 drawer tool box

97lt STORAGE CAPACITY

SP
Professional Tools



\$899

MODEL: SP50113
135pc Metric/SAE Tool Kit

- Metric & SAE combination spanners
- 1/4", 3/8" & 1/2" dr sockets & accessories
- Adjustable wrench, pliers & cutters
- Screwdrivers & hex keys
- Hammer
- 7 drawer tool box
- 5 drawer roller cabinet
- All sockets, socket accessories & ROE spanners come in hi-density foam storage system

SP
Professional Tools



MODEL: SP-1140EX
1/2" Impact Wrench

- 185mm long
- 2.58kg
- Max torque 600ft/lbs

\$299

SP
SP AIR



MODEL: SP-1145A
1/2" Dr Impact Wrench

- 190mm long
- 2.5kg
- Max torque 425ft/lbs

\$199

SP
SP AIR



MODEL: SP50041
230pc Metric/SAE Tool Kit in Atomic Green Concept Series Tool Box

- All sockets, socket accessories & ROE spanners come in hi-density foam storage system
- 1/4", 3/8", 1/2" dr sockets & accessories
- Screwdrivers and hex keys
- Bit set
- Pliers and cutters
- Adjustable wrench & hammer
- 7 drawer concept tool box

\$998

ALSO AVAILABLE IN NITRO RED MODEL SP50040

ALSO AVAILABLE IN HYPER BLUE MODEL SP50042

ALSO AVAILABLE IN BALLISTIC ORANGE MODEL SP50043

SPcliklok
SP
Professional Tools

THE ORIGINAL HEAVY DUTY COLOUR TOOLBOX - ANYTHING ELSE IS JUST A TOY

CAST IRON PORTABLE AIR COMPRESSORS

\$995

MODEL: XRS18
3hp Triple Cast Iron Portable Air Compressor

- 150psi
- Filter/Regulator
- 60lt tank
- Fad 309L/min
- 240volts/15amp

3 YEAR PUMP WARRANTY



\$1190

MODEL: XRS1800
Triple Cast Iron Portable Air Compressor

- 150psi
- Belt drive
- Filter/Regulator
- Fad 309L/min
- 100lt tank
- 240volts/15amp

3 YEAR PUMP WARRANTY



\$799

MODEL: XRV17
Cast Iron V-Twin Portable Air Compressor - 3hp

- 150psi • Filter/Regulator
- 50lt tank • Fad 251L/min

\$699

MODEL: XRV14
Cast Iron V-Twin Portable Air Compressor - 2.5hp

- 150psi • Filter/Regulator
- 50lt tank • Fad 225L/min

3 YEAR PUMP WARRANTY




\$699

MODEL: SP81128
1/2" Dr INDUSTRIAL Impact Wrench

- 18v platform
- Charging Time: 1 hour auto cut-off
- Protective blow mould case
- Torque 550N-m

2 x 3.0Ah Li-Ion Batteries



MODEL: SP81243
1/2" Dr INDUSTRIAL Hammer Drill

- 18v platform • Torque: 40N-m
- 2 Speed: Low 0-700rpm, High 0-2440rpm
- Charging Time: 1 hour auto cut-off
- 2 year warranty (Battery 1 year)
- Protective blow mould case

2 x 3.0Ah Li-Ion Batteries

SP Tools CORDLESS



Freight charges may apply to some products

itrade
 Nov-Dec-Jan 2013



metabo®

BS 18 Li & BONUS SSD

- 18v Drill driver
- 2 x 1.3 Ah batteries
- Charger
- Case
- Bonus 1/4" Hex Impact Driver Skin



\$389
Incl. GST

H 16-500 Heat Gun

- 1600W
- 2 stage
- Temp. 300°-500°
- Airflow 240 l/m - 450 l/m



\$109
Incl. GST

SBE 751 & Sortimo

- 750W
- ø13mm
- Variable/2 speed
- Safety Clutch
- with Sortimo case



\$329
Incl. GST

W72100 Angle Grinder

- 720W
- ø100mm
- Slimline
- Lightweight



\$99
Incl. GST

W2000 Angle Grinder

- 2,000W
- ø230mm
- 3 Position Side Handle



\$189
Incl. GST

SB 18 Li with Accessories Case

- 18v Hammer Drill
- 2 x 1.3 Ah batteries
- Charger
- 2 drawer accessories case



\$299
Incl. GST

BS 18 LT Compact

- 18v Drill driver
- 2 x 1.3 Ah batteries
- Charger
- Case



\$249
Incl. GST

BS 18 LTX

- 18v Drill driver
- 2 x 3.0 Ah batteries
- Charger
- Case



\$519
Incl. GST

KS 216 Compound Mitre Saw

- 1350W
- ø216mm
- Cuts 60mm
- Width 120mm
- Bevel 45°
- Mitre L-R 47°
- Light
- Laser
- Clamp



\$249
Incl. GST

work. don't play.

3 YEAR WARRANTY

3 BATTERY & TOOL WARRANTY*
*Covers Metabo's 1 year warranty plus a 2 year extension of this warranty when you register personal information online (www.metabo.com/au) within 4 weeks of purchase to quality.

#1025 INDUSTRIAL GRADE VENTILATION FAN - 300mm

- Complete with 5M of Flexible Tube (Flame Resistant)
- Dimensions: 405(H) x 320(W) x 358(L)mm
- 300mm Alloy Multi Blade Fan (3400rpm)
- 240V/50Hz 520 Watt Motor

\$349



- Air Delivery: 70m³/min
- Static Pressure: 490Pa
- Nett Weight: 14kg

#1015 INDUSTRIAL GRADE PEDESTAL FAN - 750mm

- 750mm Solid Steel 3 Blade Fan
- 240/50Hz 380 Watt
- 3 Speed Motor
- 0° to 90° Oscillating Angle or Fixed
- Cast Iron Base for Stability
- Air Flow: 300m³/min
- Metal Oscillating Gears
- Adjust. Height: 1235 to 1760mm (Blade Centre)
- Nett Weight: 27.5kg

3 Speed Motor

\$179



TQ TRADEEQUIP the brand name in equipment

Email: sales@tradequip.com.au • Web: www.tradequip.com.au • ABN 79 096 932 464

#1045 SUPERFLOW FLOOR FAN - 750mm

- 240V/50Hz/220 Watt 3 Speed Motor
- 450mm Steel 3 Wide Blade Fan
- Adjustable Flow Angle
- Nett Weight: 10kg

220 WATTS

\$139

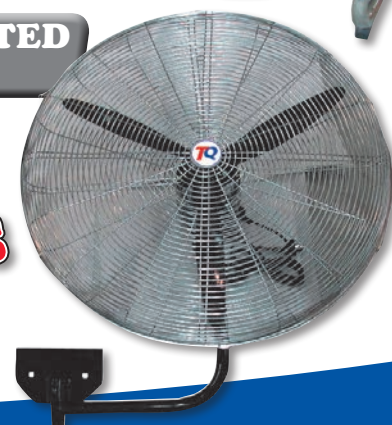


#1026 WALL MOUNTED FAN - 750mm

- 0° to 90° Oscillating Angle or Fixed
- Heavy Duty Wall Fixing Plate
- Air Flow: 300m³/min
- Metal Oscillating Gears
- 750mm Solid Steel
- 240V/50Hz 380 W
- 3 Speed Motor
- 3 Blade Fan
- Weight: 18kg

380 WATTS

\$179



ALL PRICES INCLUDE GST



itrade
Nov-Dec-Jan 2013



Freight charges may apply to some products

flexOvit

- Faster cutting with less material loss, noise and dust.
- For cutting stainless steel and ferrous metals.



- Industry standard Hearing protection



- Better fracture toughness
- Fibre backing ideal for heavy work but flexible enough for light blending

Maxx Mega Inox Cut-Off Wheels

PART NO.	DESCRIPTION	PRICE EACH (Include GST)
15102010MX	102 x 1.0 x 16mm ZAY60Y-BF41 Maxx Mega Inox	\$1.95
15102013MX	102 x 1.3 x 16mm ZAY60Y-BF41 Maxx Mega Inox	\$2.55
15115010MX	115 x 1.0 x 22mm ZAY60Y-BF41 Maxx Mega Inox	\$2.20
15127010MX	127 x 1.0 x 22mm ZAY60Y-BF41 Maxx Mega Inox	\$2.40
15127013MX	127 x 1.3 x 22mm ZAY60Y-BF41 Maxx Mega Inox	\$3.15

Deci Earplugs

PART NO.	DESCRIPTION	PRICE EACH (Include GST)
66252841341	DeciDamp2 Earplugs Class 4 SLC80 22DB (box of 200 pairs)	\$40.00
66252841417	Deci4200 Class 5 Earplugs SLC80 28DB (box of 200 pairs)	\$60.00

Norzon Plus Fibre Discs

PART NO.	DESCRIPTION	PRICE EACH (Include GST)
29135/29137/29138/29139	100 x 16 NorZon PLUS Fibre Discs Z36/Z60/Z80/Z120	\$1.10
95190/95192/95193/95194	115 x 22 NorZon PLUS Fibre Discs Z36/Z60/Z80/Z120	\$1.25
95195/95198/95199/95200	125 x 22 NorZon PLUS Fibre Discs Z36/Z60/Z80/Z120	\$1.35
95201/95204/95206/95207	180 x 22 NorZon PLUS Fibre Discs Z36/Z60/Z80/Z120	\$2.15

www.saint-gobain.com.au © Saint-Gobain Abrasives Pty Ltd. All rights reserved

Ref 320-0912 itrade



Robust Ladders
Designed to Last

Pro Series Aluminium Double Sided Step Ladders

- Solid aluminium rivet construction for high durability
- All aluminium parts are anodised for greater corrosion resistance
- Double bottom braces for superior rigidity

Model No	Size	Price
PROS6D	1.8m	\$225
PROS8D	2.4m	\$295



Pro Series Aluminium Extension Ladders

- 3-piece rung joint for anti twist performance
- Heavy duty "I" beam stiles for high durability
- All aluminium parts are anodised for greater corrosion resistance
- Automatic Ladder Leveller 'Level-Arc' fitted for working on uneven ground

Model No	Size	Price
PROX18	3.2m - 5.5m	\$348



HEAVY DUTY
INDUSTRIAL

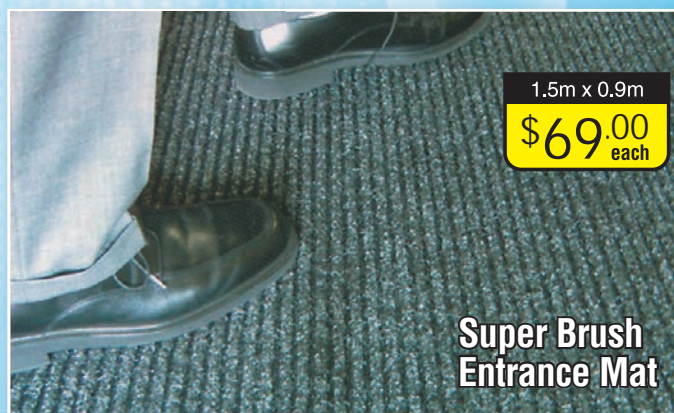


INDUSTRIAL
LOAD RATING
180 KG

Manufactured to conform with the Australian Standards

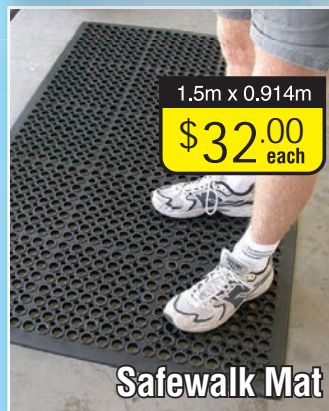


Industrial Anti-fatigue and Entrance Matting



1.5m x 0.9m
\$69.00
each

**Super Brush
Entrance Mat**



1.5m x 0.914m
\$32.00
each

Safewalk Mat



0.914m x cut to length
\$95.00
/lm

**Sparksafe
Welding Mat**



Freight charges may
apply to some products

itrade
Nov-Dec-Jan 2013



P14 Electric Belt Driven Compressor

(00257)

Free Air Delivery @ 100PSI 275LPM

2.75HP, single phase – 10Amp motor

Pump RPM: 852

Amps Draw: 9.4

Max PSI: 125

55 litre air receiver

Warranty: 5 year pump, 1 year motor

\$995.00



00257

PEERLESS
PRODUCTS PTY LTD

1516B Bench Drill (00298)

3/4HP motor, 16mm Chuck,

16 Speed, 2 Morse Taper,

Min RPM: 160 – Max RPM: 3100,

381mm swing, hole size 3 -16mm

Warranty: 3 years

\$445.00



00298

1516P Pedestal Drill (00300)

3/4HP motor, 16mm Chuck,

16 Speed, 2 Morse Taper,

381mm swing,

Hole size 3 -16mm

Min RPM: 160 – Max RPM: 3100

Warranty: 3 years

\$495.00



00300



00347

\$195.00

30 Metre Retractable Hose Reel (00347)

30 Metre 3/8" High Pressure Air Hose, 1/4" BSP Fittings, Self levelling device to prevent jamming upon rewind, UV stabilized plastic moulding, complete with 180 degree mounting bracket, complete with carry handle, 1.5M connection hose, 1M click lock system.

Compact V1603P Pedestal Drill (00374)

(00374)

Chuck size: 16mm, Motor Size: 550 Watt

Supply Voltage: 240 V, 450 - 2500 rpm

Warranty: 1 year

\$385.00



00374

\$699.00

Compact 5000 Electric Belt Drive Compressor (00334)

Free Air Delivery @ 100PSI: 235LPM, 2.5HP,

single phase – 10Amp motor, 40 litre air receiver,

Amps Draw: 9, Max PSI: 145, Pump RPM: 1160

Warranty: 3 year pump, 1 year motor



00334

Compact 2500 Electric Direct Drive (00332)

(00332)

Free Air Delivery @ 100PSI: 154LPM, 2.5HP

Single phase – 10Amp motor, Pump RPM: 2850

30 litre air receiver, Amps Draw: 8, Max PSI: 145

Designed for handyman use Warranty: 1 year total unit

\$225.00



00332

PV25P Petrol Compressor (00561)

Free Air Delivery @ 100PSI: 545LPM

9HP Honda engine, Pump RPM: 1158, 2 cylinder, slow revving,

cast iron pump, 68 litre air receiver, Max PSI: 145

Warranty: 3 year pump, 3 year Honda

\$2575.00



00561

P17 Electric Belt Drive Compressor (00087)

(00087)

Free Air Delivery @ 100PSI 320LPM, 3.2HP,

single phase – 15Amp motor, Pump RPM: 963,

Maximum PSI: 145PSI, Amps Draw: 13,

55 litre air receiver

Warranty: 5 year pump, 1 year motor

\$1050.00



00087



00047

\$189.00

20 Metre Retractable Water Hose Reel (00047)

20 metres of soft flex garden hose. Complete with nozzle and fittings. Fully assembled wall mounted self rewinding



6

itrade
Nov-Dec-Jan 2013



Freight charges may apply to some products

KC TOOLS®*'Tools to last a lifetime'***\$64**

10PC 1/2" DR IMPACT SOCKET SET,
MET 11305 • 10, 12 - 17, 19, 21 & 22mm
AF 11301 • 3/8, 7/16, 1/2, 9/16, 5/8,
 11/16, 3/4, 13/16 15/16"
 • 1/2 F to 3/8" M Adaptor

\$129

3/8" Reversible Drill
 • 1,800 RPM • 85 dBA
 • Spindle Thread - 3/8"-24
 • Length - 163mm
 • Weight - 1.4kg
SM705

\$41

14PC IMPACT DRIVER KIT
 • 5 Blade: 5, 6, 8, 10 & 12mm
 • 4 Hex: 4, 5, 6 & 8mm
 • 4 Phillips: No. 1, 2, 3 & 4
10290

\$89

8PC 1/2" IN-HEX SOCKET SETS
MET 11323 • 10, 11, 12, 13, 14, 15, 17, 19 mm
AF 11322 • 1/4, 5/16, 3/8, 7/16, 1/2, 9/16,
 5/8, 3/4"

5PC FILE SET
 • 8" Round
 • 8" Half Round
 • 8" Flat
 • 6 & 10" Mill
A15002

**\$45**

12PC UTILITY IN-LINE DRIVER KIT
 • 3,500 RPM • 83 dBA
 • Utility In-Line Driver
 • Rubber & Eraser or Brush Adaptor
 • Double Black Wheels Adaptor
 • Single Black Wheel Adaptor
 • Water Based Paint Rubber Eraser
 • Rubber Eraser • 6x Black Strip Wheels
SM135

\$619**\$48**

3/8" DR BANJO RATCHET
 • Flex head • Bent
 • 72 Teeth • Length - 260mm
 • Weight - 430g • Torque - 202 Nm
 • CR-V
NH40

\$129

1/2" DR IMPACT WRENCH
 • Torque - 250 Ft Lb
 • 7,000 RPM • 96 dBA
 • Bolt Capacity - 5/8"
 • Length - 156mm
 • Weight - 2.38kg
SM403

WWW.KCTOOLS.COM.AU**NEW!**Now with
LED Bulb**\$29.00****NEW FEATURES INCLUDE:**

40% brighter than Dolphin MK6 Xenon

100 Lumens of bright light output

47.5hrs runtime - 6X longer

146m beam distance

Tough, waterproof, floats

Lifetime guarantee (see pack for details)

**TOUGH
WATERPROOF
FLOATS**

Freight charges may
 apply to some products

itrade
 Nov-Dec-Jan 2013



EWM Phoenix **forceArc**®

THE HIGH-PRESSURE ARC



EWM / HIGHTEC®
WELDING

EWM-**forceArc**® gives less spatter

MIG/MAG standard spray arc

With conventional power sources, there is an energy increase immediately after a short-circuit phase, which causes spatter.

Disadvantage

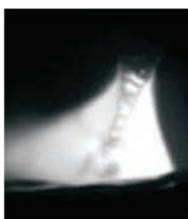
- Spatter formation

EWM-**forceArc**® arc

The highly-dynamic instantaneous value regulation configured for **forceArc**® makes it possible to compensate quickly for any possible short-circuit phases.

Advantages

- Less spatter formation and therefore less finishing work



30% FASTER WELDING

- ✓ Superior efficiency
- ✓ Perfect welding properties
- ✓ Maximum ease-of-operation

EWM-**forceArc**®

Improved fusion penetration characteristics due to high-pressure arc

MIG/MAG standard spray arc

Large seam included angle

Disadvantages

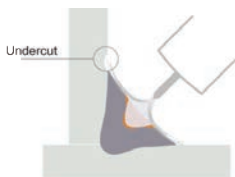
- Lot of work during weld seam preparation
- High material consumption

EWM-**forceArc**® arc

Ideal seam geometry in secure root formation

Advantages

- Approximation towards ideal seam geometry, concave seam
- No undercutting
- Excellent seam quality
- Secure root formation particularly in tight and narrow joints



EWM has developed an innovative welding process, **forceArc**® which revolutionizes in particular, the welding of low and high-alloy steels and aluminium with a panel thickness of 5 mm and over! The area of application ranges from manual to automatic use e.g. with robots. **forceArc**® - technology is now integrated as standard into every welding machine in the digital PHOENIX PULSE series!

Simply More technical welding benefits:

- **Excellent fusion penetration properties** thanks to the high arc pressure, for optimal root formation even in case of small and narrow joints
- **Improved efficiency** thanks to **up to 30% faster** welding speed when welding thick materials
- **Directionally stable, smooth arc**
- **Best possible seam quality** thanks to narrow and small heat-affected zone as well as very little weld-reinforcement
- **Fast stabilisation of changes in length** thanks to the highly dynamic arc
- **Minimum distortion** thanks to reduced energy per unit length
- **No undercuts** thanks to the short arc
- **Virtually spatter-free welding** thanks to highly dynamic current regulation via the digital system

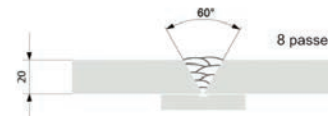
EWM-**forceArc**® - Fewer Layers - Saves Money

MIG/MAG standard spray arc

Moderate root formation

Disadvantage

- Disposition to undercutting
- Difficult root formation in tight and narrow joints

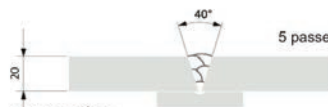


EWM-**forceArc**® arc

Small seam included angle

Advantages

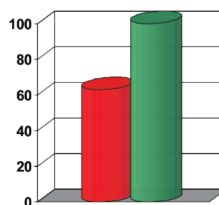
- High saving potential in weld seam preparation
- Fewer layers
- Less additive, shielding gas consumption and welding time
- Particularly advantageous for very large panel thicknesses, eg >10mm



EWM-**forceArc**® - Savings

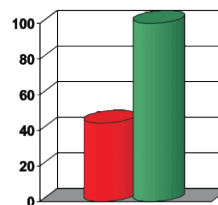
Wire Consumption

37%



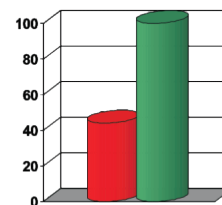
Gas Consumption

56%



Total Saving

56%



Comparison of standard spray arc with EWM-**forceArc**®

Thickness of the material: 20mm

Seam preparations spray arc: V 60 degrees 8 passes

Seam preparation EWM MIG **forceArc**®: V 40 degrees 5 passes

EWM-**forceArc**® ■
Standard Spray Arc ■

Available in 300, 400 & 500 Amp Machines.

For further information and pricing
contact your local **itrade** supplies store



itrade
Nov-Dec-Jan 2013



Freight charges may
apply to some products

UNI-MIG WELDING

ARC 140DC-MMA / TIG INVERTER

- Hot Start
- Anti Stick
- Arc Force
- MMA (Stick electrode) (DC+ / DC-)
- DC TIG Welding
- TIG Lift ARC ignition
- Thermal overload protection
- Generator compatible
- Tolerant to variable supply power



KUMJR140DC



\$250.00

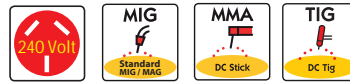
MIG/MMA/TIG 200 COMPACT

MTS **VRD**
MIG-TIG-STICK

- Latest IGBT Inverter Technology
- Multifunction Inverter:
 - MIG
 - DC TIG (WITH LIFT ARC IGNITION)
 - MMA
- Spool Gun Ready
- Digital Voltage & Amperage Meters
- Geared Wire Drive
- Voltage Reduction Device (VRD)
- Fully Compliant to AS 60974-1



KUMJR200K



\$1250.00

SITECUT 10

- No HF system, which can damage or interfere with electronics
- Post flow cooling provides torch cooling. Automatic post-flow stop for rapid re-striking
- Compact & ergonomic
- Pilot arc control facilitates uninterrupted cutting on expanded metal or grating
- Easy access at the compressor air filter for easy cleaning
- Automatic pilot arc control below 10 Amp facilitates overlapped metal sheets cutting



SITECUT10

\$1295.00

GAS CUTTING & WELDING KIT

The Complete Kit for the professional

UNIFLAME regulators have been independently tested to and comply with Australian Standards AS4267 including Oxygen promoted ignition test, IBEDA Flashback arrestors comply to Australian Standards AS4603.



KKOXY-1

\$450.00

MIG/MMA/TIG 210

MTS **VRD**
MIG-TIG-STICK

WELDER FEATURES

- Latest IGBT Inverter Technology
- Multifunction Inverter:
 - MIG
 - DC TIG (WITH LIFT ARC IGNITION)
 - MMA
- Spool Gun Ready
- Digital Voltage & Amperage Meters
- Geared Wire Drive
- Voltage Reduction Device (VRD)
- Fully Compliant to AS 60974-1



KUMJR210BSG

BONUS SPOOLGUN



\$1175.00

WELDING CURTAINS AND FRAME

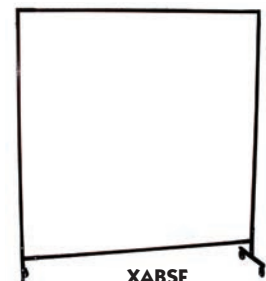


XAGWC



XARWC

Welding Curtain 1.8m x 1.8m
Steel Frame on wheels to suit
Welding Curtains.



XABSF

\$110.00

ALL PRICING INCLUDES GST



Freight charges may
apply to some products

itrade
Nov-Dec-Jan 2013



macnaught : lubrication equipment

IBC Dispensing System

OS900GE-01

- Solid hot-drip galvanised base frame
- T512-01 air-operated oil pump
- Heavy-duty, twin-pedestal oil reel - 15m x 1/2" hose
- HG20F-012E-01 metered oil control gun & holster
- All connecting fittings, hoses, breather and couplers



\$2,195

Oil Mechanical Register

HG45-01

- Pre-set mechanical display, automatic dispensing with totaliser and batch counters.
- For oils up to SAE140 viscosity with +/- 1% accuracy



\$775

GT Rapid Flo Fuel Pump

GT-01

- Suits both 60 & 205 L drums via 2-piece suction tube
- Delivers up to 100L/min (in both directions)
- Includes 2.4m anti-static hose & ULP/diesel nozzle
- In-built, lockable nozzle holder prevents siphoning
- In-built fine mesh strainer protects your fleet

\$495

Pistol Grip Grease Gun

K29-01

- Pistol-grip type action to suit 450g grease cartridges, bulk filling or by J3 transfer pump loading
- Delivery pressure up to 68,900kPa (10,000psi)
- Includes 230mm flexible extension & KY SUPERGRIP™ coupler



\$115

RETRACTA®

Low Pressure Oil Reel

OLP2121

- (400 psi) - spring-rewind
- Fitted with 10m x 12.5mm i.d. reinforced rubber hose
- 3/8" BSP (F) reel inlet and 1/2" BSP (M) hose outlet



\$495

RETRACTA® Air/Water Reel

AW2150

- Fitted with 15m x 10mm i.d. reinforced PVC hose
- Operating pressure up to 1,700 kPa (250 psi)
- 3/8" BSP (F) reel inlet & 1/2" BSP (M) hose outlet
- Complete with carry handle and mounting bracket



\$215



macnaught.com.au

macnaught
the professionals' choice

IR Ingersoll Rand

from



PNEUMATIC POWER
Air Tools and accessories

2145QiMAX 3/4" Impact Wrench

with BONUS Lube Kit & Protective Tool Cover

NEW MODEL - QUIETER - MORE POWERFUL!

- 1350 ft-lb maximum reverse torque from a tool that weighs just 3.4kg and is compact enough to access tight spaces
- Built to last and designed to withstand tough use in rugged environments
- An air motor that's 16% more efficient than its predecessor and an easy-to-clean inlet screen means less downtime, better tool performance, and less money spent on compressed air
- 6" extended anvil available
- Sound Pressure only 91db



\$775



BONUS!

W7150-K2 1/2" Cordless Impact Wrench Kit

NEW MODEL

THE SAME UNCOMPROMISING POWER AS THE CLASS LEADING 2135TiMAX AIR IMPACT WRENCH!

- Best in class power-to-weight ratio - 1,100 ft-lb (1,486Nm) of Nut Busting Torque
- 780 ft-lb MAX reverse torque
- Steel-lined aluminium hammer case designed to be strong and lightweight
- Variable speed switch with electronic brake provides maximum control
- Patent-pending soft touch over-molded grip
- Kit includes W7150 Impacttool, Charger, 2 Li-ion Batteries and case



\$895

2135TiMAX 1/2" Impact Wrench

with BONUS 14 pce Socket Set & Protective Tool Cover

- 1,100 ft-lb (1,486Nm) of Nut Busting Torque
- 780 ft-lb MAX reverse torque and weighing only 1.79kg
- Optimized air flow ensures maximum performance
- Patented four-position power regulator dial for MAX control
- Patented one-hand forward/reverse for easy operation



\$475



BONUS!

285B 1" Impact Wrench

- Delivers 1,770 ft-lb (2,400 Nm) maximum torque
- Fast-torque™ delivers 1,000 ft-lb (1,356 Nm) in 2 seconds
- Improved feather touch trigger
- The swept-back handle provides excellent maneuverability
- 6" extended anvil available for even more accessibility



\$945



itrade
Nov-Dec-Jan 2013



Freight charges may apply to some products

One Eleven



STEEL TRUCK BOXES

PART NO: BKAT700
WEIGHT: 68kg
DIMENSIONS: 700W x 600D x 750Hmm

PART NO: BKAT1210
WEIGHT: 108kg
DIMENSIONS: 1210W x 600D x 750Hmm

PART NO: BKAT1500
WEIGHT: 130kgs
DIMENSIONS: 1500W x 600D x 750Hmm

PRODUCT DETAILS:

- 2 heavy duty drawers
- T-Locks to lock top half of box
- 4 x heavy duty handles
- Rear locking rod to secure drawers
- Powder coated in ripple white
- Fitted with sealed bearing slides rated to 100kg

SPANNER & WRENCH SETS

13 PIECE METRIC COMBINATION SPANNER SET IN WALLET

PART NO: CPS13
Contains 13 metric spanners 7-19mm

SPANNER SET FEATURES

- High Torque Performance
- Chrome Vanadium Steel
- Platinum One Finish
- Full Lifetime Guarantee

24 PIECE METRIC & A/F COMBINATION SPANNER SET IN WALLET

PART NO: CPS24
Contains 13 metric spanners 7-19mm
11 A/F Spanners 1/4" - 7/8"

3 PIECE PRY BAR SET

PART NO: PBS3

Sizes:
200mm x 6mm
300mm x 9.5mm
450mm x 11mm

FEATURES

- Made from fully tempered chrome vanadium
- Ergonomic Handle

BLACK CHECKERPLATE STEEL BOXES

PART NO: ST765
WEIGHT: 5kg
DIMENSIONS: 765W x 325D x 250Hmm

PART NO: ST1140
WEIGHT: 7.5kg
DIMENSIONS: 1140W x 340D x 375Hmm

PRODUCT DETAILS:

- Powder coated black gloss
- Strong plated chest handles
- Flush fitted keyed lock on ST1140
- Galvanised steel construction
- Made from checker plated steel, spot welded
- Hasp & Staple on ST765 for security

SITE BOXES

PART NO: SITE BG
WEIGHT: 65kg
DIMENSIONS: 1200W x 620D x 710Hmm

PART NO: SITE TWO BG
WEIGHT: 72kg
DIMENSIONS: 1220W x 760D x 850Hmm

PART NO: SITESUPABOX
WEIGHT: 132kg
DIMENSIONS: 1525W x 765D x 1168Hmm

PRODUCT DETAILS:

- Made from fully welded cold rolled steel
- Provision for fork lift & Extra heavy duty side handles
- Finished in powder coated yellow
- Gas struts & Concealed hinges
- Padlocks to be fully concealed

BALL PEIN HAMMERS

Ball Pein Hammer 16oz
Part Number: BPH16
\$30.00 inc GST

Ball Pein Hammer 24oz
Part Number: BPH24
\$33.00 inc GST

Ball Pein Hammer 32oz
Part Number: BPH32
\$36.00 inc GST

SPECIALTY TOOLS

Part Number: STS25

WEIGHT: 2.2KG
DIMENSIONS: 562W x 395D x 32.5Hmm
15 Piece Specialty Tools in EVA insert to suit 8 drawer chest

- Right Angle Hook
- Small Angle Hook
- Full Hook
- Glass Scraper
- Pack of 10 Utility Knife Blades (suit scraper)
- 4 x Door Upholstery Panel Pullers
- Hose Pluck
- Cotter Pin Puller
- Scratch Awl
- Gasket Scraper
- Straight Pick

LOW PROFILE ALUMINIUM BOXES

PART NO: LP1250
WEIGHT: 19kg
DIMENSIONS: 1250W x 600D x 500Hmm

PART NO: LP1550
WEIGHT: 27kg
DIMENSIONS: 1550W x 600D x 500Hmm

PRODUCT DETAILS:

- Lower profile means more visibility from cabin
- Lid lifts almost to vertical position for easy access
- Fitted with Gas Struts & T-Locks keyed alike
- Made from 2mm Aluminium Checkerplate

ALUMINIUM TRUCK BOXES

PART NO: AL1450
WEIGHT: 21kgs
DIMENSIONS: 1450W x 520D x 465Hmm

PART NO: AL1250
WEIGHT: 14kgs
DIMENSIONS: 1250W x 380D x 380Hmm

PART NO: AL765
WEIGHT: 6kgs
DIMENSIONS: 765W x 335D x 250Hmm

PRODUCT DETAILS:

- Manufactured from 1.5mm Aluminium Checkerplate
- Fully welded construction with Gas struts to support lid
- Strong hinges to secure lid to body
- Reinforced lid & Strong plated side handles

ALUMINIUM ONE TONNERS PACK

PART NO: AL1210UTPACK

1 x PART NO: AL1210
WEIGHT: 30kg
DIMENSIONS: 1210W x 500D x 680Hmm

2 x PART NO: UTBSQ
DIMENSIONS: 400W x 220D x 400Hmm

PRODUCT DETAILS (AL1210):

- Hinged angled lid, fully welded and fitted with flush fitting T-Locks keyed alike
- Full rubber seals, gas struts & Concealed stainless steel piano hinge
- Supplied with full length shelf: to be fitted by user

ADJUSTABLE WRENCHES

150mm/6" Adjustable Wrench Part Number: 6AW \$18.00 inc GST

200mm/8" Adjustable Wrench Part Number: 8AW \$22.00 inc GST

250mm/10" Adjustable Wrench Part Number: 10AW \$28.00 inc GST

300mm/12" Adjustable Wrench Part Number: 12AW \$38.00 inc GST

380mm/15" Adjustable Wrench Part Number: 15AW \$68.00 inc GST

www.1-11.com.au



Freight charges may apply to some products

iTrade
Nov-Dec-Jan 2013



#1012 STEEL WORK BENCH

\$550

- Powder Coated Paint Finish
- 3mm Steel
- Heavy Duty Steel Construction
- Dimensions: 2000(L) x 860(H) x 640(W)mm
- 3 Lockable 1.5mm Sheet Steel Drawers
- Nett Weight: 100.8kg



#1003 PARTS WASHER - 90 LITRE

- 240V/50Hz/0.5A
- Strong Steel Fabricated Design
- High Volume Pump (3.15 l/min)
- Overall Dimensions: 780(L)x540(W)x900(D)mm
- Tank size: 760(L) x 530(W) x 260(H)mm
- 240V pump output 220 litres per hour
- Safety Drop Down Lid

\$199

- 90 litre Capacity
- Nett Weight: 28kg
- Suitable for Cleaning of all Parts



#3031 SANDBLASTER - INDUSTRIAL

BUILT TO LAST

- 14 Gge Steel Legs (16 Gge Panels)
- Natural Rubber / Vinyl Gloves
- External Fluoro Light
- Pistol-grip Gun
- Work Pressure: 60-125psi
- Air Reg. / Gauge
- Powder Coated

\$1795

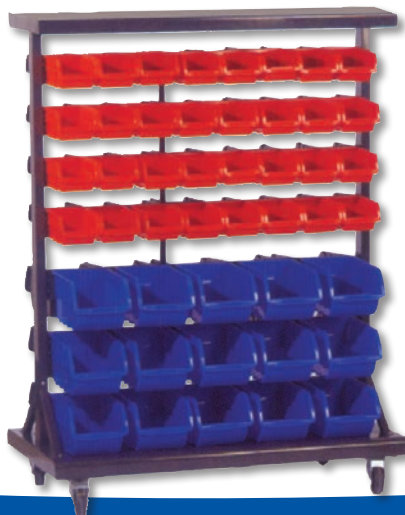
- Internal Cab: 1200x600x570mm
- Foot-Pedal Op
- Weight: 122kgs.



#9068 HEAVY DUTY MOBILE DOUBLE SIDED STORAGE BIN RACK

- 30 Large Bins / Loading Capacity: 4kg/each
- 64 Small Bins / Loading Capacity: 2kg/each
- Size: 940 x 500 x 1240mm
- Nett Weight: 33kg

\$299



TRADEQUIP

the brand name in equipment

Email: sales@tradequip.com.au • Web: www.tradequip.com.au • ABN 79 096 932 464

#2003 AIR HYDRAULIC JACK - 20,000Kg

- 20,000kg Safe Working Capacity
- Size: 500(L) x 1275(H) x 320(W)mm
- Complete with 4 Inter-changeable Saddles
- Hydraulic Lift: 120mm
- Adjustable Height: 80mm
- Minimum Height: 230mm
- Maximum Height: 430mm
- Nett Weight: 41.4kg

\$695



#2037 HYDRAULIC PRESS - 50,000Kg

- Winch on Table Rise and Fall
- Working Range: 0 - 1035mm
- Ram Lifting Height: 180mm
- 100mm Pressure Gauge

\$1795

- 2 Stage Pump
- Width: 650mm
- Nett Weight: 450kg

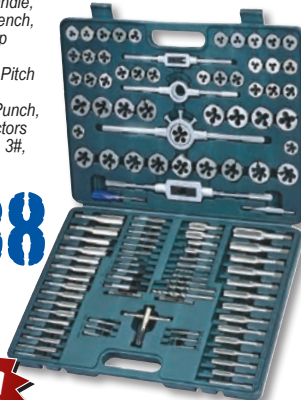


#7117 115 PCE TAP AND DIE SET - METRIC & SAE

- Die Sizes (48Pcs) • Tap Sizes (48Pcs)
- Drills 5 Pcs: 2.5, 3.3, 4.2, 5, 6.8mm
- 2 Pcs Die Handle, 2Pcs Tap Wrench, 1 Pc Type Tap Wrench, 2 Pcs Screw Pitch Gauge, 1Pc Centre Punch, Screw Extractors 5Pcs: 1#, 2#, 3#, 4#, 5#

\$188

NEW!



#7124 CUT OFF SAW KEN 14"

NEW!

- No Load Speed: 3800r/min
- Disc Diameter: Ø355mm
- Frequency: 50Hz
- Input Power: 2300W
- Nett Weight: 17.5 kg
- D-shape handle for easy gripping.
- Park Diversion Guard for operation safety

\$199



#9093 INDUSTRIAL RACK WITH INTERLOCKING WIRE DECKS

\$399

- Welded End Frames
- 4 Adjustable Shelves with Wire Decks
- Bolt Free Design
- Powder-coated Steel
- Single Tool Assembly
- Each Shelf Holds 907kg
- Can add Additional Racks
- 1953mm (wide) x 610mm (deep) x 1829mm (high)
- Nett Weight 82kg



ALL PRICES INCLUDE GST



Use a QR scanner on your smartphone to scan the QR code for your nearest Member's location or visit www.itradesupplies.com.au

Nov-Dec-Jan 2013